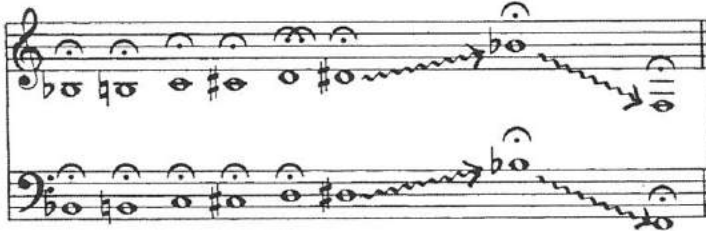


EXERCÍCIOS DIÁRIOS

1. Sustentar os tons

- 1.1. Fixação do ponto em que o bocal é levado aos lábios. Por isso usar somente posições intermediárias.
- 1.2. Tocar cada tom de um só fôlego. Observar especialmente a técnica de respiração. Elaborar a clareza e a beleza do tom.

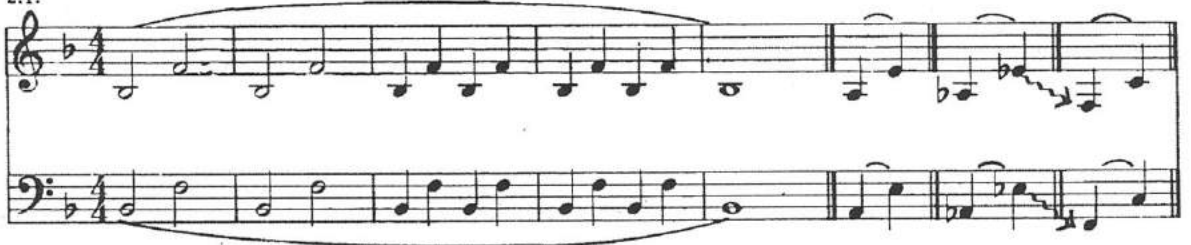
A impulsão se dá com o desejo de respirar, portanto, não permitir a formação de represamento na boca.



Ensaiai cromaticamente para cima e para baixo.

2. Ligaduras

2.1.




Neste exercício é importante que os tons graves sejam produzidos apenas por maior abertura dos lábios. A tensão labial e a pressão do bocal sobre os lábios deveriam permanecer quase as mesmas. Ensaiai essas ligaduras também sempre em semitom-mais grave.

2.2.



Essa ligadura se produz por meio de mudança da tensão: "Tensão dos cantos da boca".

- 2.3. Agora vamos usar também o movimento da língua: por meio do estreitamento do canal de ar entre a língua e o céu da boca o tom salta (a ). A língua deve ficar na frente.



Repetir cada frase tantas vezes quantas forem possíveis.

3. Exercícios diários de aquecimento e de embocadura

Depois de dominar as ligaduras, deve-se exercitar os seguintes estudos diários de aquecimento e embocadura. No entanto, comece sempre pelos tons prolongados na posição intermediária (1.2.).

The page contains eight systems of musical notation, each consisting of a treble and bass staff. The exercises are as follows:

- System 1:** 3/4 time. Treble staff: A series of eighth notes with slurs and ties, starting on G4 and moving up to D5. Bass staff: A series of eighth notes with slurs and ties, starting on G2 and moving up to D3.
- System 2:** 3/4 time. Treble staff: A series of eighth notes with slurs and ties, starting on G4 and moving up to D5. Bass staff: A series of eighth notes with slurs and ties, starting on G2 and moving up to D3.
- System 3:** 5/4 time. Treble staff: A series of eighth notes with slurs and ties, starting on G4 and moving up to D5. Bass staff: A series of eighth notes with slurs and ties, starting on G2 and moving up to D3.
- System 4:** 5/4 time. Treble staff: A series of eighth notes with slurs and ties, starting on G4 and moving up to D5. Bass staff: A series of eighth notes with slurs and ties, starting on G2 and moving up to D3.
- System 5:** 7/4 time. Treble staff: A series of eighth notes with slurs and ties, starting on G4 and moving up to D5. Bass staff: A series of eighth notes with slurs and ties, starting on G2 and moving up to D3.
- System 6:** 7/4 time. Treble staff: A series of eighth notes with slurs and ties, starting on G4 and moving up to D5. Bass staff: A series of eighth notes with slurs and ties, starting on G2 and moving up to D3.
- System 7:** 9/4 time. Treble staff: A series of eighth notes with slurs and ties, starting on G4 and moving up to D5. Bass staff: A series of eighth notes with slurs and ties, starting on G2 and moving up to D3.
- System 8:** 9/4 time. Treble staff: A series of eighth notes with slurs and ties, starting on G4 and moving up to D5. Bass staff: A series of eighth notes with slurs and ties, starting on G2 and moving up to D3.