

SHOW ME THY WAY

Trompete Solo

Swing ♩ = 90

A

f

4

8

B

14

C

23

30

35

1., 2.

3.

43

52

58

62

ff

♩ = 60

SHOW ME THY WAY

Primeiro, Segundo e Terceiro Trompetas

♩ = 90

Musical score for three trumpets (Primeiro, Segundo e Terceiro Trompetas) for the piece "SHOW ME THY WAY". The score is in G major, 4/4 time, with a tempo of 90. It consists of 28 measures.

Section A (measures 1-9) features a strong dynamic (*f*) and a fortissimo accent (*sfz*). Section B (measures 10-12) is marked with a fortissimo accent (*sf*). Section C (measures 13-15) is marked with a fortissimo accent (*sfz*). The score includes various musical notations such as slurs, accents, and dynamic markings.

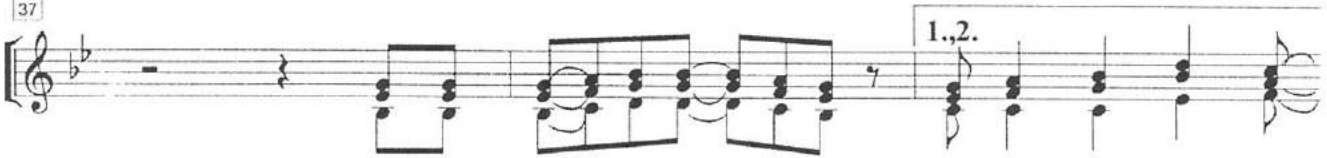
30



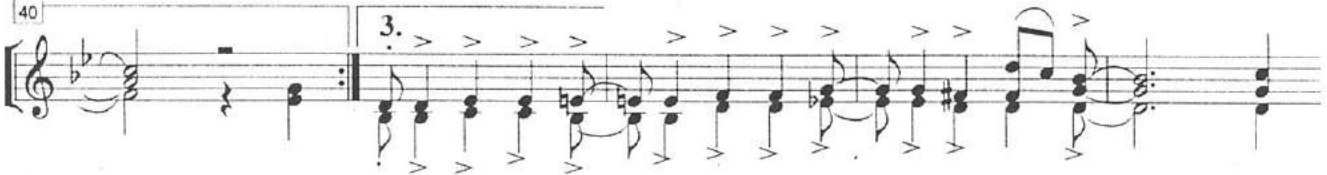
34



37



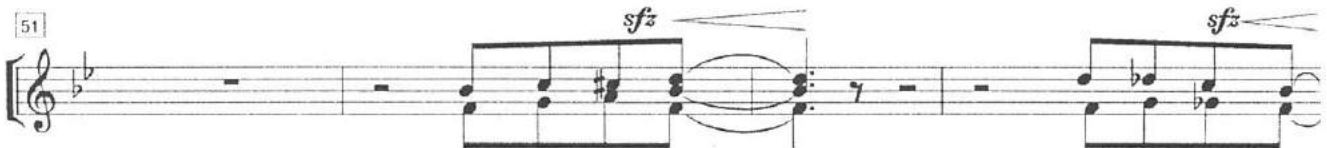
40



45



51



55



59



62



65



SHOW ME THY WAY

Trombone, Bombardino e Tuba

$\text{♩} = 90$

A *f* *sfz* *sfz*

3 *sfz* *sfz*

6

9 **B**

12

15 **C**

18

22

25 *sfz* *sfz* *sfz*

30

33 *sfz* *sfz*

Musical score for Trombone, Bombardino, and Tuba, page 2 of "Show me thy Way". The score is written in bass clef with a key signature of one flat (B-flat). It consists of ten staves of music, numbered 36 through 65. The notation includes various rhythmic values, accidentals, and dynamic markings such as *sfz* (sforzando) and *ff* (fortissimo). The score features several measures with rests, indicating where the instruments should be silent. The music concludes with a final chord in measure 65.

36 *sfz* 1. 2.

40 3.

43

46

49 *sfz*

53 *sfz*

56 *sfz*

59

62 *ff*

65